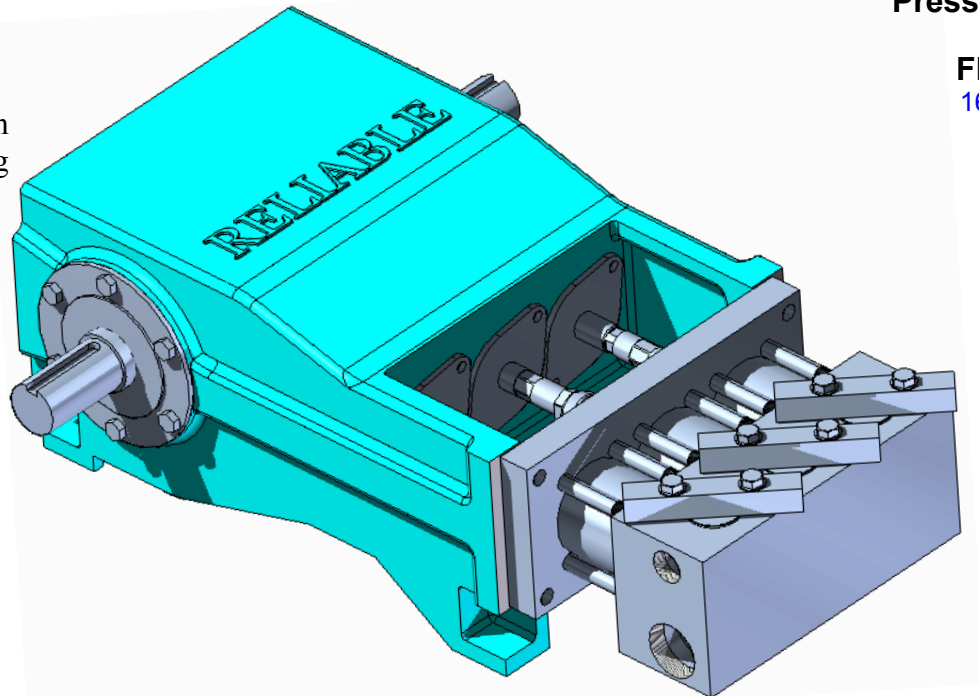


RD100HV Series

Applications

- Tank cleaning
- Well service
- Chemical injection
- Hydrostatic testing
- Boiler feed
- Saltwater disposal



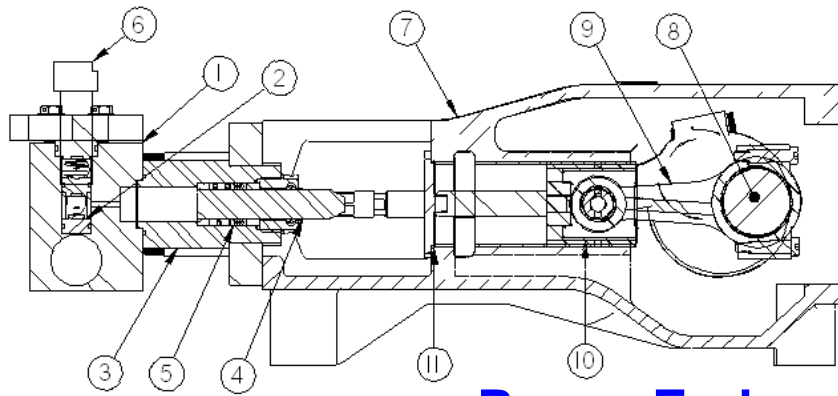
Pressures to
5000 psi
Flows to
160.6 gpm
Power
100 hp

Features

- Pressure range of 1000 psi to 5000 psi.
- Flow rates from 11.1 gpm to 160.6 gpm
- Approximately 95% volumetric efficiency for maximum horsepower utilization.
- Maximum plunger load of 7200 lbs.
- Easy field maintenance.
- All stainless steel fluid end construction.
- Designed for continuous service.
- Manufactured on state of the art machinery.
- Rigorously subjected to full load testing.

Performance Specifications

RD100 SERIES 3.5" STROKE											
MAX. PLUNGER LOAD 7200 LB.				FLOW							
		MAX PRESSURE		20 RPM		300 RPM		400 RPM		500 RPM	
BORE	PLUNGER DIA.	PSI	BAR	GPM	LPM	GPM	LPM	GPM	LPM	GPM	LPM
2 1/2"	1.250" - 31.75 MM	5000	344.82	11.1	42	16.7	63.2	22.3	84.4	27.9	105.5
	1.500" - 38.1 MM	4000	275.86	16	60.8	24.1	91.2	32.1	121.5	40.1	152
	2.000" - 50.8 MM	2000	137.93	28.5	108	42.8	162	57.1	216.1	71.4	270.2
3 1/2"	2.500" - 63.5 MM	1500	96.55	44.6	168.8	66.9	253.2	89.2	337.7	111.5	422.1
	2.750" - 69.85 MM	1200	82.75	54	204.3	81	306.4	108	408.6	135	510.8
	3.000" - 76.2 MM	1000	68.96	64.2	243	96.3	364.5	128.5	486.3	160.6	607.9



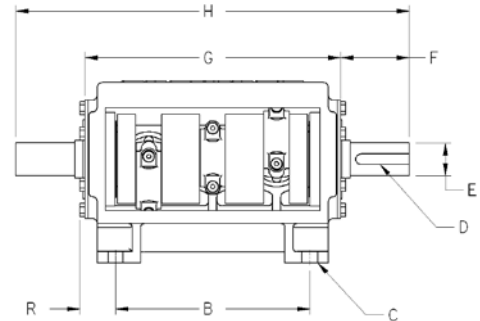
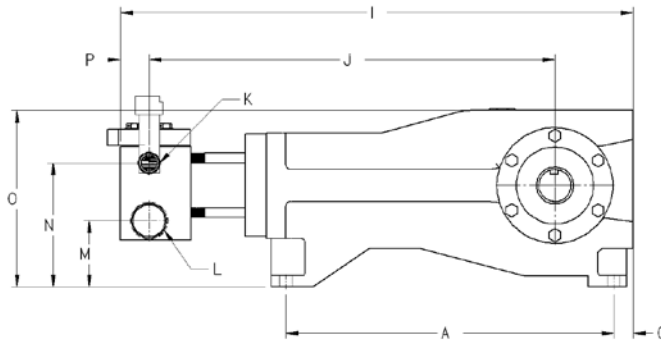
Fluid End

- 1. Fluid Cylinder Body:** Machined from a solid block of stainless steel. Internal cylinder bore volume is minimized and shot peened.
- 2. Valves:** Heat treated stainless steel, wing guided and spring loaded for positive closing. Valve seats are straight shoulder with O-ring seals. Both are machined, heat treated and ground.
- 3. Stuffing Boxes:** Machined from heat treated stainless steel.
- 4. Plungers:** Carbide coated stainless steel.
- 5. Plunger Packing:** Multiple element chevron style, spring loaded, and self-adjusting. Easily replaceable from the rear of the stuffing box. Force fed water provides lubrication and cooling
- 6. Pressure Relief:** Pressure safety head assembly (rupture disc), integrally mounted in the fluid cylinder. Relief valve is included.

Power End

- 7. Power Frame:** Manufactured from a single piece casting of high strength grey cast iron.
- 8. Crankshaft:** Double extended cast alloy steel with tapered roller bearings to minimize side thrust load.
- 9. Connecting Rods:** Ductile iron with automotive type split insert bearings.
- 10. Crossheads:** Large, piston type constructed of grey iron.
- 11. Diaphragm Seals:** Installed with O-rings or gaskets and neoprene seals.

Bearings and crossheads are oil lubricated with a combined splash gravity system that insures adequate circulation at speeds as low as 200 rpm.



	A	B	C	D	E	F	G	H	I	J	K	L	M	N	O	P	Q	R
in.	24.25	15.5	1.1875	0.625	2.5	4.375	21	25.375	39.125	31	2 NPT	5 NPT	5	9.5	13.5	2.375	1.625	2.625
mm	615.95	393.7	30.163	15.875	63.5	111.13	533.4	644.53	993.78	787.4			127	241.3	342.9	60.325	41.275	66.675

*Reliable reserves the right to change specifications without notice.

5404 Cedar Crest St.
Houston, TX 77087
(713) 640-2718 • 1-800-801-6993
FAX (713) 640-1604

